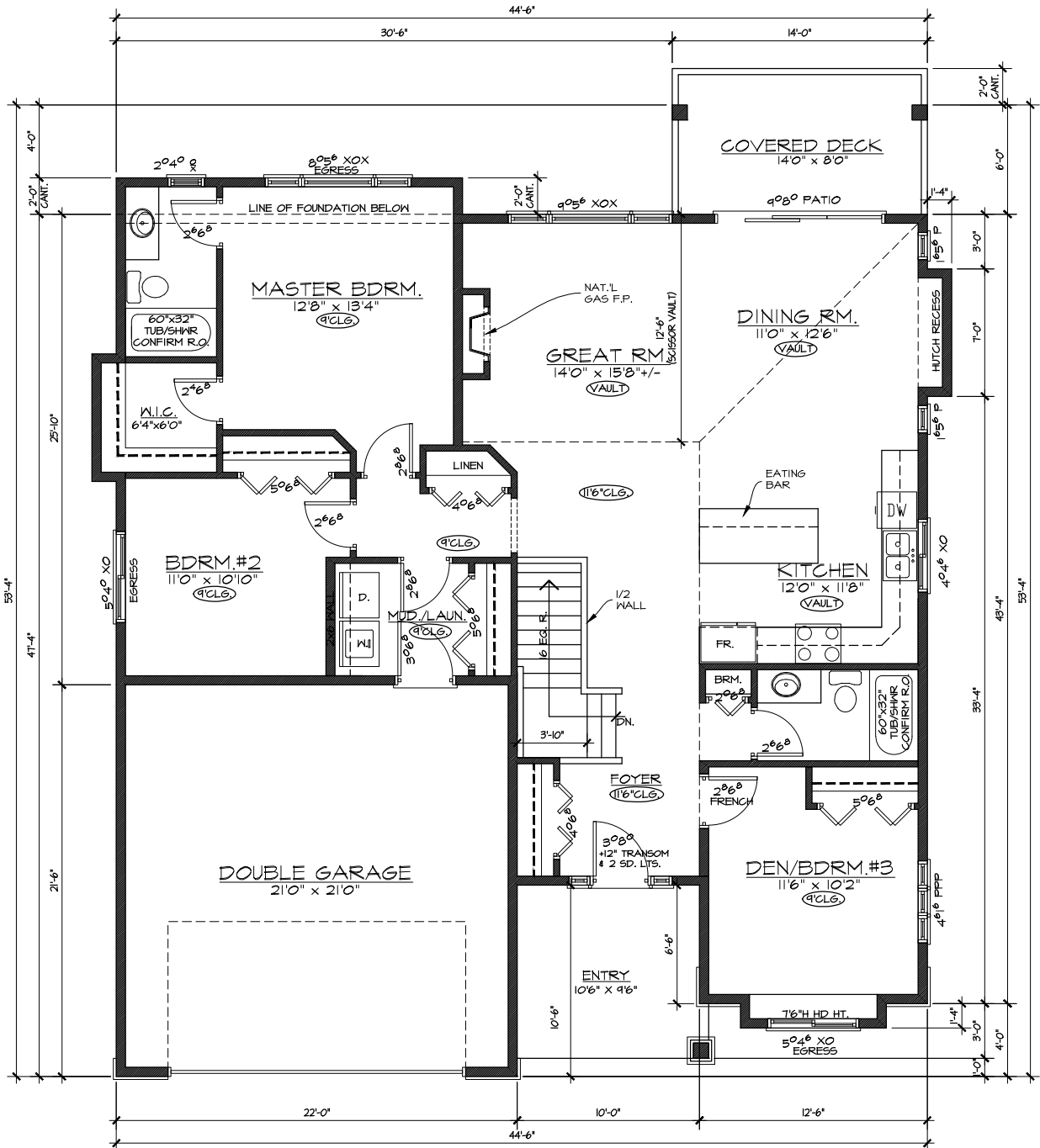




1,541 sq/ft Bungalow/Rancher - 2 Bed Plus Den - Options for Crawl, Basement, or Walkout Basement
3,000 sq/ft Total - 4 or 5 Bedrom Plus Den with Optional Finished Basement \$29,900 + gst

(all measurements, design elements, and layouts are for demonstration purposes only and are subject to change without notice)



MAIN FLOOR PLAN
 FINISHED 1541 SQ. FT.