

**SHOW HOME  
SUMMER  
SPECIAL!**

**\$439,000 + hst**

(\$469,000 inc. net hst)

SHOW HOME



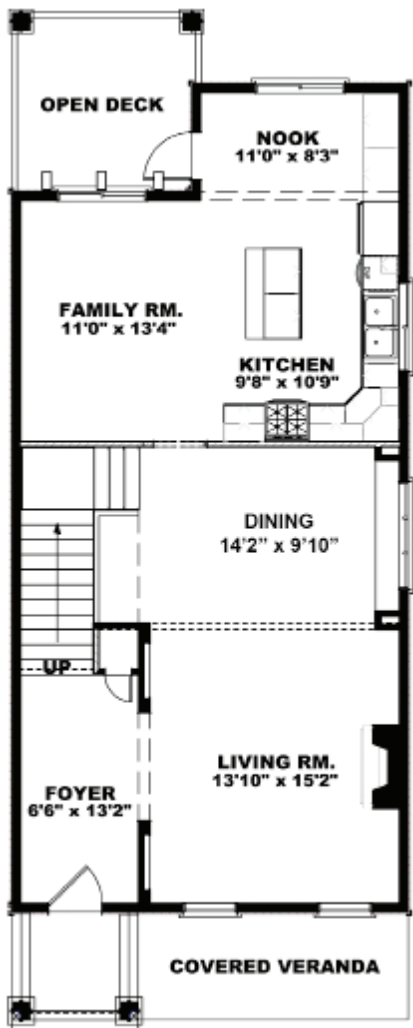
**Quick Possession!**

**2,762 ft<sup>2</sup>  
Walkout**

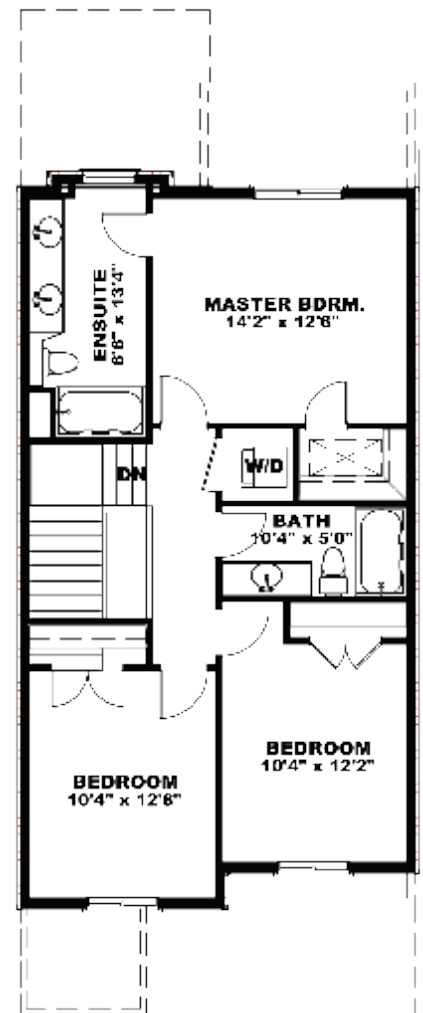
(Includes basement, mechanical & stairs)

*The Monashee*  
**Show Home**

- Two Storey - Partial Walkout
- Separate Basement Entrance
- Detached Double Garage (Lane)
- Large Corner Lot - Across from Park
- Gorgeous Lake Views
- 9 Foot Ceilings - main
- 3 Bedroom | 2 Bathrooms (inc. Ensuite)
- Open Living Room and Dining Room
- Spacious Family Room/ Kitchen
- Kitchen w/ Island & Built-in Pantry
- 4 Stainless Steel Appliances
- (Fridge, Stove, D/W, Micro/Hood Fan Combo)
- Vaulted Master Bedroom
- Master Ensuite with Double Sinks
- Upstairs Laundry
- Large Front Veranda with Views
- Linear Burner Electric Fireplace
- Air Conditioning
- Fully Landscaped inc. Irrigation



Main Floor 952 ft<sup>2</sup>



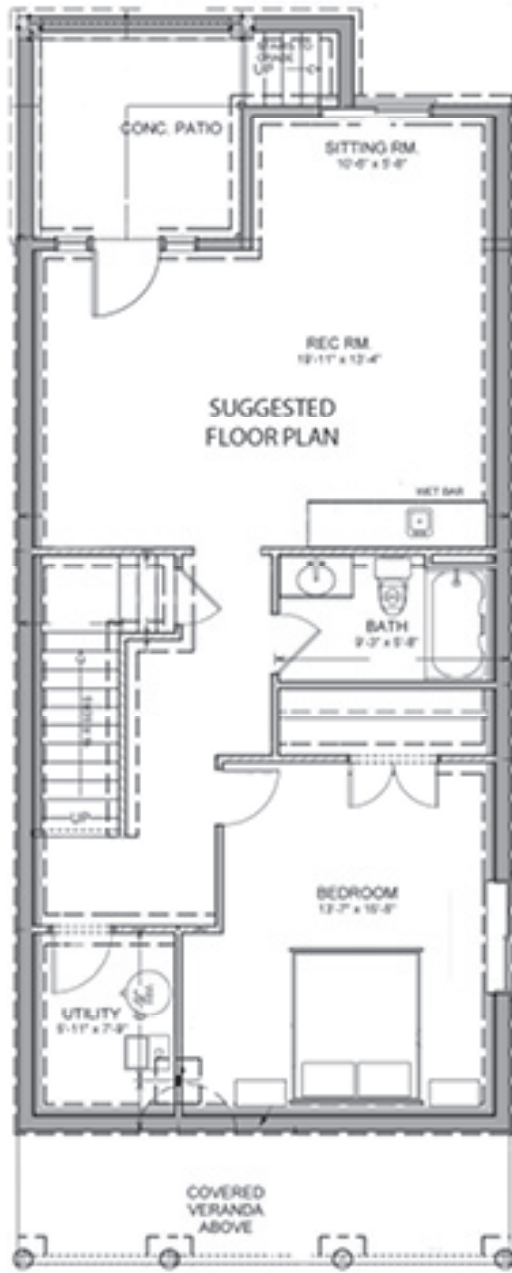
Upper Floor 858 ft<sup>2</sup>



[www.VillageHeights.ca](http://www.VillageHeights.ca)  
250.863.7253

Builder plans and specifications are subject to change without notice. Final product may not be exactly as shown.

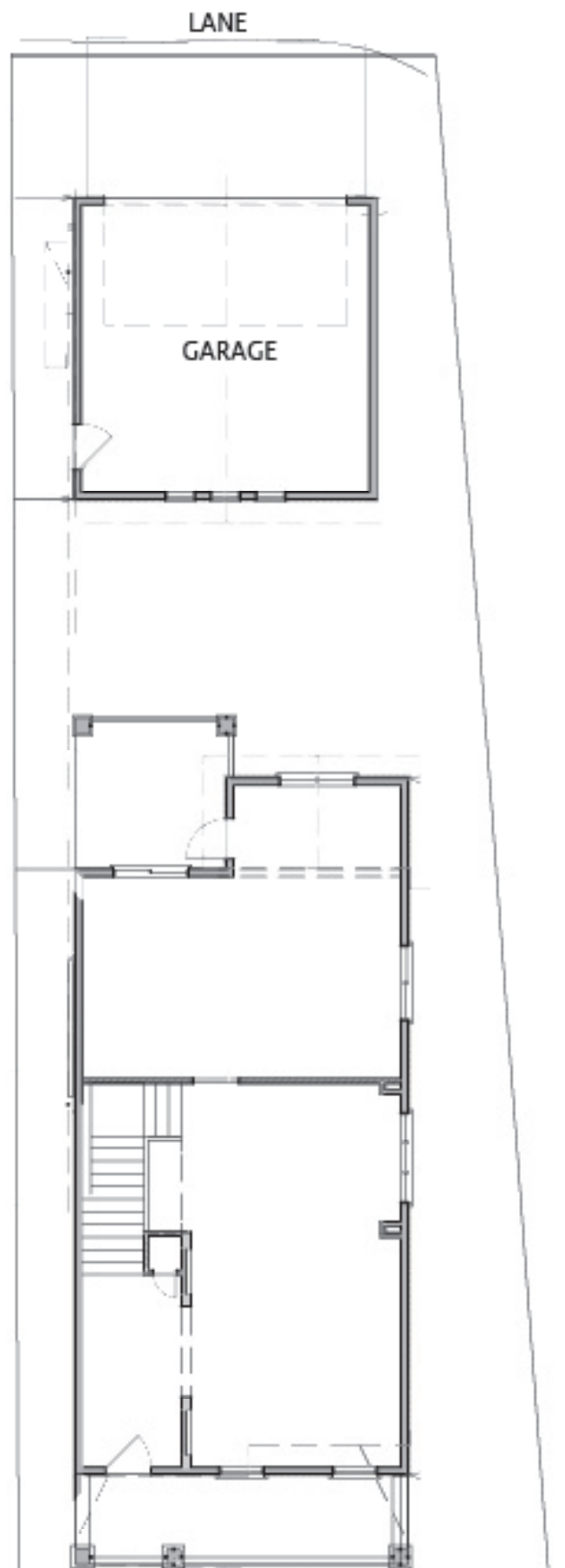
# MONASHEE



Basement 952 sq/ft Unfinished



Rear Elevation



Typical Lot Layout